

MOTORCYCLE SERVICE NEWS

**YAMAHA KULTMOTO
WORKSHOP**

Switzerland, May 2021



www.kultmoto.ch

Number 137 488

**Page
P1 of 2**

TX 750

Oil Cleaner Replacement

Dear TX Friends

By popular request from the community, we have once again dealt in detail with the topic of oil cleaners for the TX 750 as no perfect solution has been developed so far.

We now believe that we found the solution for the various issues with the cleaner and its placement which provides significant advantages over the present alternatives. As a result, we decided to launch a small batch of oil cleaner adapters and offer you (hopefully the ultimate...) oil cleaner adapter kit with which the cleaner change is finally a breeze.

Order at: http://www.kultmoto.ch/rampe/TX750_oilcleaner.htm

Scope of delivery

The conversion kit for the oil cleaner adapter includes the following parts:



- 1 x Oil cleaner adapter, incl. assembly instructions
- 1 x O-ring 50 x 3.5mm
- 1 x O-ring 30 x 3.5mm
- 1 x hexagon socket screw M8 x 90mm
- 1 x copper ring gasket 8.2 mm
- 1 x oil cleaner element Mahle OX37D

Assembly instruction



Remove the chain guide (341-17466-00) and open the drive chain at the chain lock.

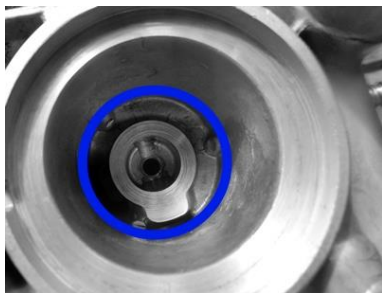
Note: The drive chain only needs to be disconnected when first converting to the new oil cleaner adapter. The filter element can be replaced at the next service without opening or removing the chain.



Remove the original oil cleaner flange.

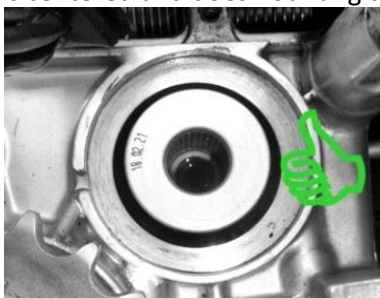


The new oil cleaner element can now be inserted in the engine housing with the black rubber seal first. Remove the perforated protective paper before inserting.

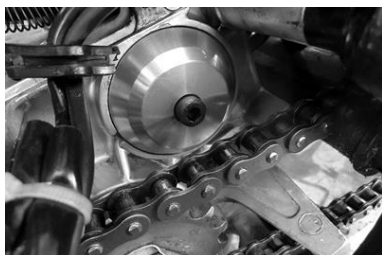


The oil cleaner element fits exactly into the milled-out limits in the engine housing. The oil cleaner element must be inserted precisely with a twisting motion and, if necessary, with slight pressure.

Make sure that the filter element is centered and does not hang down at the front. (see pictures)



Push the new oil cleaner adapter with both inserted O-rings onto the oil cleaner element and fix it with the supplied screw (M8 x 90). Make sure that the copper ring seal has been placed on the screw.



Tighten the oil cleaner adapter with the screw. The recommended tightening torque is 15Nm.

Now the chain and the chain guide can be fitted again and since the adapter installation will probably be combined with an oil change, do not forget to fill in oil!

Important Notice:

This is a private sale, the goods are manufactured to the best of our knowledge and any sale takes place under the exclusion of all warranty and liability.